

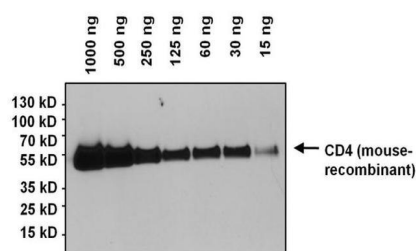
CD4 Monoclonal Antibody (GK1.5)

Product Details

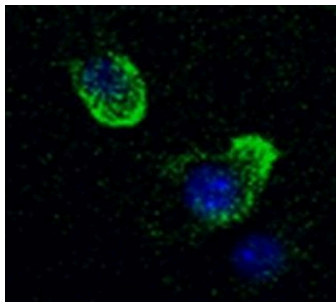
Size	50ul/100ul
Species Reactivity	Mouse
Published Species	Mouse
Host/Isotype	Rat / IgG2b, kappa
Class	Monoclonal
Type	Antibody
Clone	GK1.5
Conjugate	Unconjugated
Immunogen	Mouse CTL clone V4
Form	Liquid
Concentration	1 mg/mL
Purification	Protein G
Storage buffer	PBS with 1mg/mL BSA, 30% glycerol
Contains	0.05% sodium azide
Storage conditions	-20°C

Applications	Tested Dilution	Publications
Western Blot (WB)	1:1,000	-
Immunohistochemistry (IHC)	-	-
Immunocytochemistry (ICC/IF)	1:20	-
Flow Cytometry (Flow)	1:50	-

Product Images For CD4 Monoclonal Antibody (GK1.5)



Western blot analysis of CD4 was performed by loading various amounts of recombinant mouse CD4 extracellular domain and 10 μ L of PageRuler Prestained Protein Ladder onto a 4-20% Tris-HCl polyacrylamide gel. Proteins were transferred to a PVDF membrane and blocked with 5% BSA/TBST for 1 hour. The membrane was probed with a CD4 monoclonal antibody (RA1116) at a dilution of 1:1000 overnight at 4°C on a rocking platform, and probed with a goat anti-rat IgG-HRP secondary antibody at a dilution of 1:10000 for 1 hour. Chemiluminescent detection was performed using ECL .



Immunofluorescent analysis of CD4 (green) on the surface of D10.G4.1 mouse T-lymphocytes. Formalin fixed cells were blocked with 1% Blocker BSA for 15 minutes at room temperature. Cells were probed with a CD4 monoclonal antibody (RA1116) at a dilution of 1:20 for 1 hour at room temperature, washed with PBS, and incubated with a DyLight 488-conjugated goat anti-rat IgG secondary antibody. Nuclei (blue) were stained with Hoechst 33342 dye.

For Research Use Only. Not for use in diagnostic procedures. Not for resale without express authorization. Products are warranted to operate or perform substantially in conformance with published Product specifications in effect at the time of sale, as set forth in the Production documentation, specifications and/or accompanying package inserts ("Documentation"). No claim of suitability for use in applications regulated by FDA is made. The warranty provided herein is valid only when used by properly trained individuals. Unless otherwise stated in the Documentation, this warranty is limited to one year from date of shipment when the Product is subjected to normal, proper and intended usage. This warranty does not extend to anyone other than the Buyer. Any model or sample furnished to Buyer is merely illustrative of the general type and quality of goods and does not represent that any Product will conform to such model or sample. NO OTHER WARRANTIES, EXPRESS OR IMPLIED, ARE GRANTED INCLUDING WITHOUT LIMITATION, IMPLIED WARRANTIES OF MERCHANTABILITY, FITNESS FOR ANY PARTICULAR PURPOSE, OR NON INFRINGEMENT. BUYER'S EXCLUSIVE REMEDY FOR NON-CONFORMING PRODUCTS DURING THE WARRANTY PERIOD IS LIMITED TO REPAIR, REPLACEMENT OF OR REFUND FOR THE NON-CONFORMING PRODUCT(S) AT SELLER'S SOLE OPTION. THERE IS NO OBLIGATION TO REPAIR, REPLACE OR REFUND FOR PRODUCTS AS THE RESULT OF (I) ACCIDENT, DISASTER OR EVENT OF FORCE MAJEURE, (II) MISUSE, FAULT OR NEGLIGENCE OF OR BY BUYER, (III) USE OF THE PRODUCTS IN A MANNER FOR WHICH THEY WERE NOT DESIGNED, OR (IV) IMPROPER STORAGE AND HANDLING OF THE PRODUCTS. Unless otherwise expressly stated on the Product or in the documentation accompanying the Product, the Product is intended for research only and is not to be used for any other purpose, including without limitation, unauthorized commercial uses, in vitro diagnostic uses, ex vivo or in vivo therapeutic uses, or any type of consumption by or application to human or animals.